

# W@M Portal and W@M Enterprise for Life Cycle Management



### Effective management of your installed base throughout your asset's life cycle

- Web-based tools for easy access to information about your installed devices
- Automatic device documentation, such as original calibration certificates, operating manuals
- Overview of process criticality and risk of maintainability of instruments
- Traceability of calibration, repair and maintenance events
- Open interfaces for easy integration of information into your existing tools



## W@M Life Cycle Management

### The information you need at your fingertips

As part of Endress+Hauser's W@M Life Cycle Management portfolio, the web-based W@M Portal and W@M Enterprise tools improve your data flow and assist to manage technical and operational information completely and conveniently at any time or place.

Readily available and up-to-date information and documentation allows:

- Effective monitoring of your installed base
- Increased plant productivity and safety
- Minimized plant downtime

Only when you are fully aware of your plant's status can you implement a proactive maintenance strategy in order to save time and money.



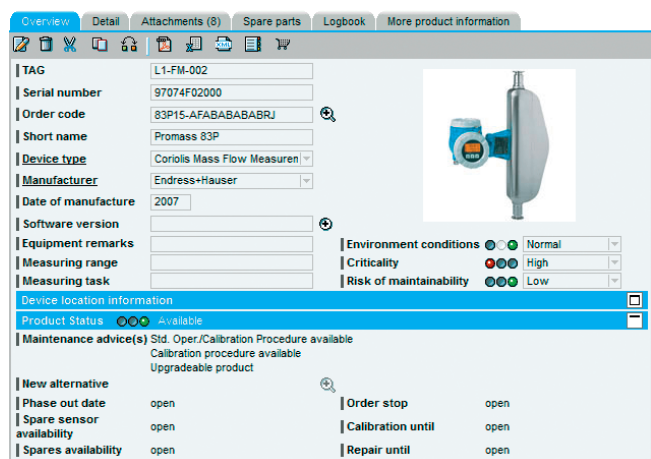
Easy navigation and overview of available applications for engineering, procurement and operations

### Work better, work smarter

Endress+Hauser's W@M Life Cycle Management tools enable you to reduce your internal workload while simultaneously improving process quality by:

- Selecting the most suitable instruments and specifying the measurement technology that best fits your requirements.
- Checking availability and prices, requesting quotations and ordering quickly online.
- Getting fast access to critical information such as spare part lists and maintenance events..

Thanks to the online connection to Endress+Hauser's product database, you automatically benefit from up-to-date information on your instruments e.g. product availability, original calibration certificates, operating manuals etc.



Up-to-date information on your installed base

# Documenting,...

## Spare parts

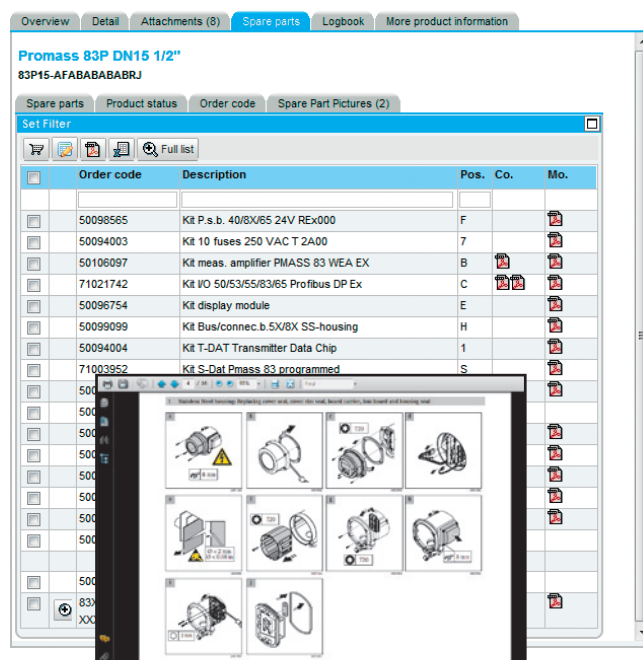
Spare part lists for Endress+Hauser instruments are automatically available. Exploded view drawings help to easily identify the right parts.

## Logbook

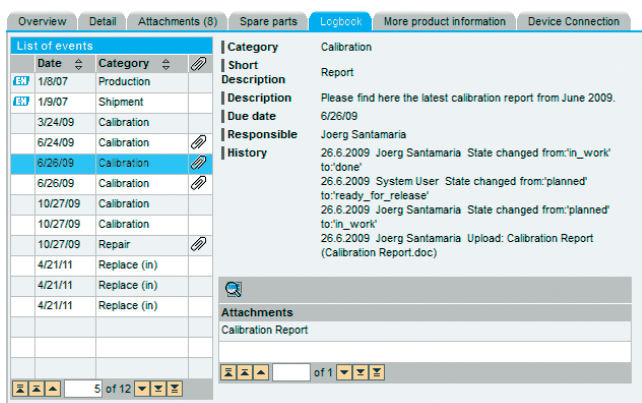
All events for a device can be recorded in the Logbook. If Endress+Hauser repairs or calibrates an instrument, this event is logged automatically (maintenance and repair reports are also available on request).

## Documentation management

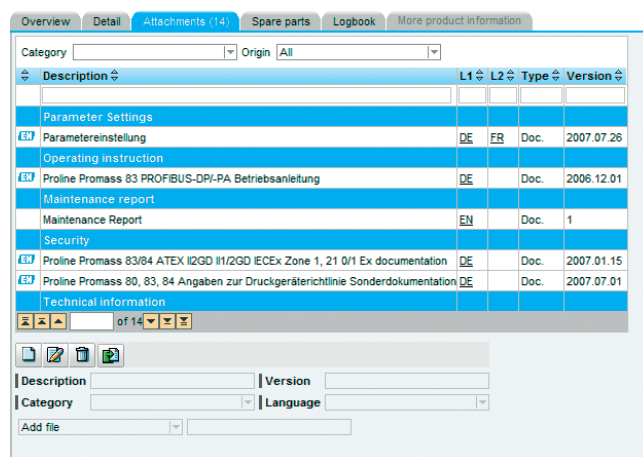
For all Endress+Hauser products, the complete documentation set is available. Moreover you are able to attach your own important documents related to any registered device (e.g. CAD drawings, certificates). With a single click you may even assign a document to all devices of the same type.



Automatically generated spare parts list for multiple instruments



Logbook for traceability of calibration, repair and maintenance events



Automatic documentation handling for Endress+Hauser devices



## ... analyzing,...

### Plant structure for an easy navigation

Do not waste time any more in trying to find out what is installed where! We have added a plant structure to W@M Portal or W@M Enterprise tools so that you can easily 'walk through' the entire plant and get a clear overview of your installed base of instruments.

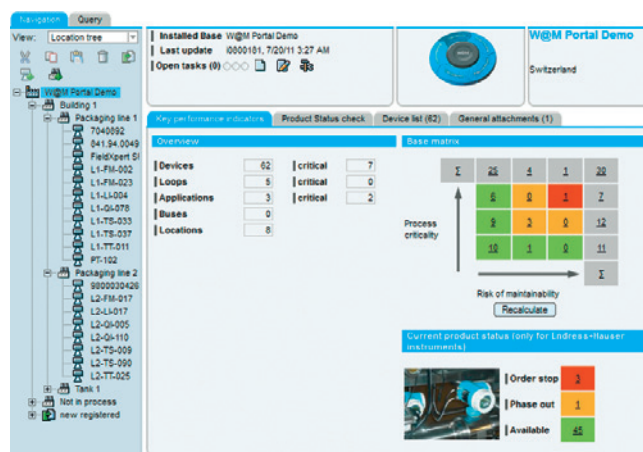
With help of the tree view navigation, any combination of location or sub-locations, applications, loops and bus systems can be mapped, allowing you to reproduce the exact structure of your plant. Even third party devices (i.e. valves and pumps) can be added and are simple to manage thanks to the easy-to-use templates.

### Key Performance Indicators

The relative process criticality and risk of maintainability of the analyzed instruments are displayed in a matrix. Now you know where to direct your maintenance efforts!

The plant structure can be recorded during engineering phase or later via an Installed Base Audit. Conducted on-site by Endress+Hauser, this audit also provides you with all

necessary data to complete the matrices. Please contact your Endress+Hauser representative for more information about Installed Base Audit.



Overview of installed base to monitor criticality of instruments

## ... and managing your installed base.

### Task scheduler

For those of you who have not already implemented a Computerized Maintenance Management System (CMMS), our W@M Portal and W@M Enterprise tools feature an integrated Task Scheduler.

This easy-to-use tool will assist you with your maintenance management activities and keeps track of routine tasks such as repair, periodical maintenance or checking. A task can be assigned to any recorded device and user; the automatic notification (via email) will remind users of their scheduled tasks.

The screenshot shows the 'Scheduled tasks' interface. The top part is a table with columns: State, Due date, Description, State, Category, Responsible, and Linked to. The table contains several rows of tasks, including 'Sel austauschen', 'Calibration ABCD', 'Visual check', 'Flow Calibration', and 'Visual check'. Below the table, there is a 'Details' section for a selected task. It shows fields for Category (Calibration), Status (done), Description (Flow Calibration), Interval (3 Months), Long description (Please carry out Flowmeter Calibration according to SOP), Created (7/1/10), Due date (7/12/10), Created by (Abele, Philipp), and Responsible (Häner, David). There is also a 'Recipients / cc:' field and a 'Linked to' field with a dropdown menu showing 'Device: 411\_FT12' and 'TAG 411\_FT12, ordercode: OPT3000-AADER, serial number: 10034665, installed Base: Chocolate Company'.

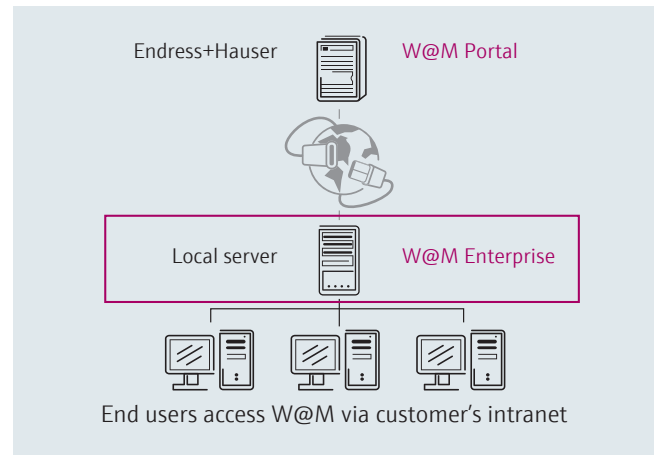
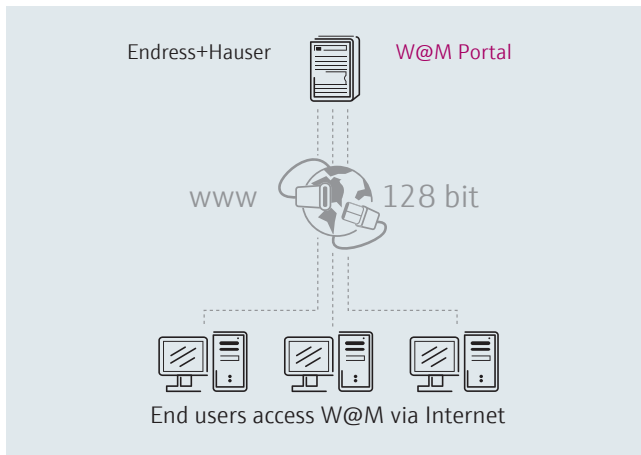
Task Scheduler to easily plan and execute maintenance management activities



# W@M Portal or W@M Enterprise?

The W@M Life Cycle Management portfolio contains web-based and platform independent tools for different phases and purposes. For the operations phase two products are available that offer nearly identical functionality: W@M Portal and W@M Enterprise.

Depending on factors such as IT requirements, security level and internet availability at the plant, you may choose which IT architecture will provide the optimum solution for your needs.



## W@M Portal

- W@M Portal is hosted by Endress+Hauser - no local installation is required
- The W@M Portal is accessible worldwide from any computer with internet access via secure login (username/password)
- You benefit from a 128 bit encrypted internet connection
- W@M Portal offers an easy integration into existing Computerized Maintenance Management Systems

## W@M Enterprise

- W@M Enterprise is available through a local client/server installation at your site
- W@M Enterprise can connect to Endress+Hauser servers for data download (pictures, product availability information, spare parts, etc.)
- W@M Enterprise can replicate with W@M Portal: newly purchased instruments and service or repair events are added automatically
- Sensitive third party device data is stored locally, Endress+Hauser data is stored locally and remotely





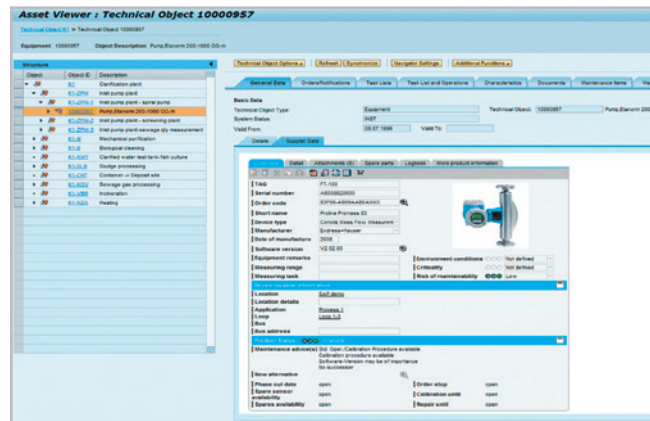
## Easy integration into your existing tools

### Integration into Endress+Hauser tools

If you already possess one of Endress+Hauser's device configuration or calibration tools such as FieldCare, CompuCal™ or Memobase, you can access detailed device information directly from W@M Portal or W@M Enterprise with a single click. What is more, this also works for third party instruments managed in the W@M Portal and W@M Enterprise.

### Integration into CMMS

The information content of W@M Portal or W@M Enterprise can be integrated into existing CMMS (Computerized Maintenance Management Systems) installations such as SAP PM, Maximo from IBM or any other system. Users do not have to learn how to use a new system: they keep working in their familiar environment but get access to much more information about their assets.



Device details in W@M Portal or W@M Enterprise embedded in CMMS (e.g. SAP PM)



### Contact

For more information about W@M Life Cycle Management, please contact your local Endress+Hauser sales representative or go to

[www.endress.com/lifecyclemanagement](http://www.endress.com/lifecyclemanagement)

### Additional documentation

- W@M Life Cycle Management, Supporting your business processes CP001Z/00/en
- Plant Asset Management FA00024S/04/EN
- Installed Base Audit FA00019H/29/EN
- Software support FA00024H/29/EN
- FieldCare CP00001S/04/EN
- CompuCal™ CP00012S/04/EN

#### Instruments International

Endress+Hauser  
Instruments International AG  
Kägenstrasse 2  
4153 Reinach/BL  
Switzerland

Tel +41 61 715 8100  
Fax +41 61 715 2888  
info@ii.endress.com  
www.endress.com

#### Other locations

Please visit:  
[www.endress.com/worldwide](http://www.endress.com/worldwide)