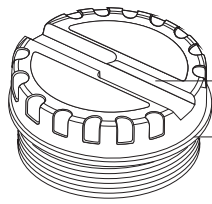


Spare parts for Liquiphant II with aluminium housing T3

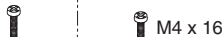


- 918 709 - 0020 Cover aluminium (F3)
- 918 709 - 0021 Cover aluminium, marked (F3)

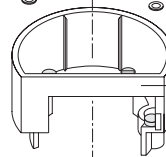
- 015 238 - 0000 O-ring, 88 x 3



- electronic insert for FTL 365 / 366
- 919 908 - 0001 FEL 31
- 919 908 - 0002 FEL 32
- 919 908 - 0003 FEL 33
- 919 908 - 0004 FEL 34



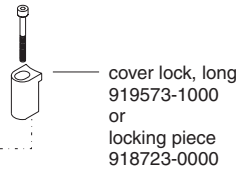
- electronic insert for FDL 35 / 36
- 919 908 - 0007 FEL 37



- 919 456 - 0000 holder



- 919 458 - 0000 clamp strap



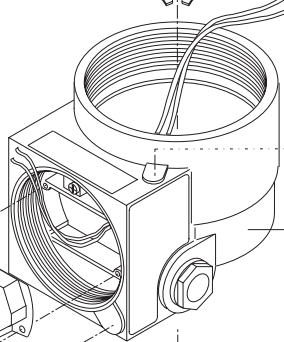
- cover lock, long
919573-1000
or
locking piece
918723-0000

terminal module for FTL 365 / 366

electronic insert	certificate	part number
2wire f. FEL 31		519571-0000
5wire f. FEL 34	R, Q, U	519571-0001
3wire f. FEL 32		519572-0002
3wire f. FEL 33		519572-0001
2wire f. FEL 31		519725-0000
3wire f. FEL 32	D, E, I,	519724-0002
3wire f. FEL 33	2, 3, 5, 6	519724-0001
5wire f. FEL 34		519725-0001

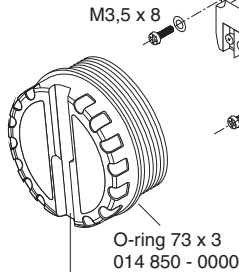
terminal module for FDL 35 / 36

2wire for FEL 37	519572-0000
------------------	-------------



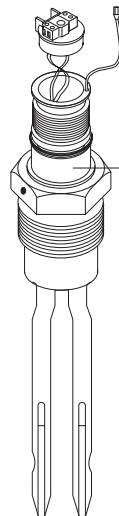
- housing complete
including cover without marking and cover lock

cable entry	electronic insert	part number
PG16	FEL 31	519 569 - 1000
PG16	FEL 32 / 33	519 569 - 0005
PG16	FEL 34	519 569 - 1100
NPT 3/4"	FEL 31 / 34	519 569 - 1401
NPT 3/4"	FEL32 / 33	519 569 - 0406



- cover (T3) M77
5201 2600
- cover (T3) M77, marked
5201 5548

- cover lock, short
919573-0000
or
locking piece
918723-0000



sensor complete

sensor compact			
fork	thread	FTL 365	FDL 35
standard	G 1 A	519357-0000	519357-0002
polished	G 1 A	519357-0001	519357-0003
standard	NPT 1"	519355-0000	519355-0002
polished	NPT 1"	519355-0001	519355-0003

sensor with extension			
fork	thread	FTL 366	FDL 36
standard	G 1 A	519358-9000	519646-9000
polished	G 1 A	519358-9000	519646-9000
standard	NPT 1"	519358-9000	519646-9000
polished	NPT 1"	519358-9000	519646-9000

Please add the sensor length and all varinates to the order of sensors