



Level



Pressure



Flow



Temperature



Liquid
Analysis



Registration



Systems
Components



Services



Solutions

Applicator

Selection and Sizing Tool
for your Planning Processes

Endress+Hauser 

People for Process Automation

- Applicator Sizing Flow
- Applicator Sizing Gamma

Sizing

Selection

- Applicator Selection
- Applicator Industry Applications

Administration

- Applicator Project
- Applicator Spec Sheet Interface



Applicator: three tasks – one solution

Time is money

The challenges in instrumentation engineering of a plant are numerous: Planners must obtain an overview of the whole project right from the start, they have to combine application and instrumentation to arrive at safe decisions. This is equally true for product selection, calculation and the administration of different projects. Calculations are complex and the variety of products cannot be mastered. Safe calculations and sizing of measuring points become time-consuming cost generators.

Applicator provides planning reliability, fast and flexibly

The Applicator software of Endress+Hauser is a convenient selection and sizing tool for planning processes. Using the entered application parameters, e.g. from measuring point specifications, Applicator determines a selection of suitable products and solutions. Supplemented by sizing functions and a module for project administration Applicator will alleviate your daily engineering work. Applicator has been steadily developed for many years and proves its worth every day a thousand times in the most varied applications of customers as well as associates of Endress+Hauser.

Take the easy way

Just work with this clear Applicator desktop and straightforward module structure. Selection, calculation or administration, regardless of where you intend to enter a project, Applicator provides an open door for you to start anywhere. And if you want to proceed from one module to another one, this is accomplished by a mere click and there is nothing to prevent a smooth exchange of data.



Selection



“Our company, GES.IDR.A, operates water treatment and sewage plants in Bergamo, Italy. We use the Endress+Hauser Applicator software to react to new requirements early on and to implement the same in our plants in a fast and uncomplicated manner. I particularly appreciate the simple selection, configuration and the additional technical information which is available for each instrument. The product selection software is an ideal support in our day-to-day work.”

(Dario Locatelli, GES.IDR.A S.pa.A)

Applicator Selection and Industry Applications

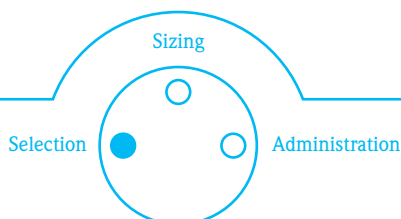
You know the application, but do you also have the appropriate measuring system for your application? The Selection module contains the Endress+Hauser product range with more than 600 components. You just enter the parameters of your measuring point and get a reliable selection of suitable products by return. The comparison table provides an optimum overview so that you can easily select the right product.

You may choose from all products for level, flow, density, pressure, analysis, temperature and registration as well as system components. After the entry of application parameters, for example ambient conditions (pressure, temperature, ...) or interface specifications or approvals, suitable products and components are proposed and shown together with pictures and properties. In addition, they can be viewed in comparative displays of products, components and measuring principles. Printouts of prespecification sheets in PDF-format as well as the transfer of selected products to the Sizing

function or the Project module support basic engineering.

Applicator Industry Applications

You use Applicator Industry Applications for product selections based on an application-oriented navigation, either by pictures or tree navigation for the respectively selected application. The measuring point sheet can be accessed directly for every measuring task. It shows different options and tender texts are easily called.





Enter application parameter



Product comparison of selected products

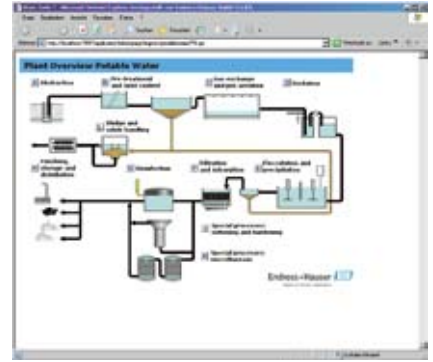


Image navigation –
Displays the plant overview



Sizing



“At BASF, the Endress+Hauser Applicator tool is used frequently. The software was certified for the internal use on our workstations and can be used by all our employees now. Applicator results are obtained extremely fast with only very few entries. They are easily stored and documented. For us at BASF, Applicator is an important tool for our work.”

(Peter Müller, Radiometry Department, BASF Ludwigshafen)

Applicator Sizing Flow and Sizing Gamma

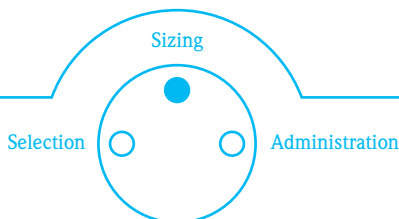
You know the right measuring system, but what about precise sizing of the measuring point? Product sizing for flow measuring points or radiometry requires complex calculations. This is not a problem for the Sizing module. Sizing Flow and Sizing Gamma make the calculation clear and reliable. Applicator shows the result in a well arranged display in words and images and can also represent it in form of a graph with particularly detailed information.

Applicator Sizing Flow

This sizing application calculates all of the data required to determine the optimum flowmeter from product families, e.g. nominal width, pressure decline, accuracy, process connections, etc. The results of the calculation are displayed, among other options, in different graphs and may be printed out or transferred to the Project module.

Applicator Sizing Gamma

This sizing application helps you to find radiometric solutions for level, limit and density applications. The activity and a control area are calculated taking the geometry into consideration. A display of graphs and sketches supports the selection of the suitable product and documents the sizing results. The results of the calculation may, of course, be printed out or transferred to the Project module by a mere click.





Input of process parameter and display of calculation results



Display of calculation results in a chart



Input of tank parameter and calculation of source activity



Administration



“We from NatureWorks LLC, the leading producer of biopolymers, have been using the Applicator software of Endress+Hauser at our company for more than a year. In our work, we appreciate that the parameters can be easily changed upon entry without having to start the program again every time. We get the required information, e.g. the accuracy or the price of an Endress+Hauser product within a few seconds. We also appreciate the varied additional features like the export of PDFs of specifications and the possibility of storing the same.”

(Don Marek, Instrument and Electronics Technologies, NatureWorks LLC)

Applicator Project and Spec Sheet Interface

You have your planning process under control, but do you also have a proper database to save your projects and reproduce them, if required? The “Administration” module was developed so that you do not have to start from the beginning in each project and to provide you with a safe basis of information after long periods of time. All of the data and parameters relevant to a project are stored in this module and may be accessed during the whole life cycle of a project at any time.

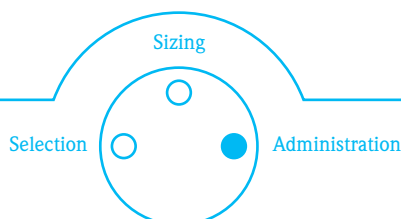
Applicator Project

The Project module facilitates the storage of data from the product selection and sizing process of Applicator Selection and Applicator Sizing for individual measuring points. The Project module structures projects in hierarchy levels and administers and documents them from the company level through to TAG numbers. Applicator Project supports the administration of several databases as well as person and role management within projects. Projects may be exchanged via the import/export functions. A Configurator interface facilitates the completion of order structures and prices.

Applicator Spec Sheet Interface *

The Spec Sheet Interface permits you to read in electronic specification sheets, e.g. from CAE programs. The respective measuring points are created as TAGs in the Project module. The data from the specification sheets may be transferred to the Selection, Sizing or Configurator module. Configured products can easily be exported via the Spec Sheet Interface. Specification sheet formats in Excel and Applicator-XML are supported. Ref: Model code DXA80

*License fee required





Compensation of new imported spec sheet



Administration and documentation of projects in hierarchy levels



Display of TAG lists to print or export



Applicator



“The Applicator development is closely aligned to the needs of our customers. Their wishes are continually included in the improvement of the program. To this end, we maintain a permanent exchange of ideas with our customers.

The availability of the program on the Internet is very convenient for users; they can access the program worldwide in a flexible manner. More and more users decide on the Internet version as an alternative to the CD-ROM.

I use Applicator regularly for internal training sessions and seminars; also at these events, we get a positive feedback from our associates. Applicator informs on all Endress+Hauser products in a comprehensive manner and saves time and resources both for customers and at our company.”

(Giovanni Colucci, Product Manager at Endress+Hauser Germany)

May we give you a little more?

All in all, Applicator is a tool which makes the engineering process extremely reliable and, last but not least, economically efficient. It facilitates both fast and targeted product selection and simple, application-oriented sizing. Applicator of Endress+Hauser does not pose further questions but provides qualified answers to the challenges of the planning process you face every day.

The advantages of Applicator:

- Planning reliability
- Timesaving
- Safe project data
- Flexibility in work processes

The fast way to your Applicator

Applicator of Endress+Hauser may be used free of charge both via the Internet and in form of a CD. You can order the CD version quite conveniently online

<http://www.us.endress.com/applicator>





W@M



Life Cycle Management for your plant

Originally planned as an Asset Management System based on Internet technology, W@M was expanded in the planning phase to meet other customer requirements. Today it can do much more than a conventional Asset Management System: it is an open information system, enabling optimum management of all your measuring and control technology. W@M assists you with a wide range of software applications covering the entire process of planning, procuring, installing, commissioning and operating our field measuring devices – and also in parts for other instrumentation suppliers products. You can access many of the applications online via your Endress+Hauser website, or by obtaining the applications on CD-ROM.

The advantage that using W@M offers you is clear to see: you have round-the-clock access to all relevant information about every single field measuring device used at your plant – and this over the entire life cycle. This offers you access to an application that is already filled with the data of your Endress+Hauser products. Errors made when entering the data stock are ruled out. We also take care of maintenance and updates of the data stock for you.

If, for example, you want to renew the measuring technology at your plant or if you want to redesign a plant, our Applicator selection software helps you to find the right product for the measuring task in question. You can then purchase the corresponding product quickly and easily at our online shop. And to ensure that commissioning runs smoothly, there is FieldCare – our software for the configuration, diagnosis and maintenance of measuring devices.

However, since we know how individually you would like to manage your business processes, W@M can be perfectly adapted to suit your particular needs. Therefore, contact your application consultant if you want to know how to use W@M at your company. Together, we will develop the solution best suited for your needs.

www.us.endress.com/W@M





We care about your products

Endress+Hauser is a global supplier of process automation solutions. The company develops sensors and systems for production and logistics. These products acquire, transmit and use process information. The products are excellent in both performance and price; the services are ground-breaking. Both aid customers' competitiveness with a maximum of quality, safety and

efficiency. A tight network of production and sales companies, together with local agents, gives Endress+Hauser a strong presence across global markets. The company owes its good reputation to industry know-how, and to employees' creativity and commitment. Endress+Hauser stands for financial strength and continuity, the broadest range in its industry, and long-term customerrelationships.

ISO 9001:2000 Certified

08.07/SCUSA

USA	Canada	Mexico	International
<p>Endress+Hauser, Inc. 2350 Endress Place Greenwood, IN 46143 Tel: 317-535-7138 Sales: 888-ENDRESS Service: 800-642-8737 Fax: 317-535-8498 inquiry@us.endress.com www.us.endress.com</p>	<p>Endress+Hauser Canada 1075 Sutton Drive Burlington, ON L7L 5Z8 Tel: 905-681-9292 800-668-3199 Fax: 905-681-9444 info@ca.endress.com www.ca.endress.com</p>	<p>Endress+Hauser México S.A. de C.V. Fernando Montes de Oca 21 Edificio A Piso 3 Fracc. Industrial San Nicolás 54030 Tlalnepantla de Baz Estado de México México Tel: +52 55 5321 2080 Fax: +52 55 5321 2099 eh.mexico@mx.endress.com www.mx.endress.com</p>	<p>For international locations visit: www.endress.com/worldwide</p>